



For Business Enquiries

India & South Asia :  
Stone Sapphire India Pvt. Ltd.  
21, Makwana Rd, Gamdevi, Marol, Andheri East, Mumbai - 400 059, India. Mobile +919999340899

MENA :  
Red Ridge Global Trading LLC  
Office 204, Building 8, Bay Square, Business Bay, Dubai Mobile + 971 551329701

Email: [mail@stonesapphire.com](mailto:mail@stonesapphire.com) • [www.peggy-oliver.com](http://www.peggy-oliver.com)



## HORECA CATALOGUE



## CONTENT

Our Vision & Mission	01	Gratin Dishes	28
Setting the table of Elegance	02-03	Vases	28
From Local Origins to Global Luxury	04-05	Gravy Boats & Setters	29- 30
Eden	06-07	Pasta Plates	31
Purity	08-09	Tea Mugs	32
Serve Ware	10-11	Small Dishes ( S & M)	33
Opus-	12-13	Small Dishes ( L)	34
Vessel	14-15	Bowls ( S)	34
Thick Simply	16-17	Bowls ( M)	35
Aurora	18-19	Bowls ( L)	36
Simply Square	20-21	Soup Cup & Setters	36
Flat Rim	22-23	Tea Cup & Saucers	37
Accessories	24-25	Sugar Bowls	37
Trays	26	Creamers & Tea Pots	38
Finger Bowls	27	Coffee Pots	39
Butter Cover & Setter	27	Large Tea Cups & Setters	39
Toothpick Holders	27	Coffee Cup & Saucers	40
Spoons	28	Others	41



## OUR VISION

“Enhancing your dining experiences with elegant and timeless tableware”

## OUR MISSION

Revolutionize and set new standards of excellence in dining with premium, functional and timeless tableware.

## SETTING THE TABLE OF ELEGANCE.

We understand that in the hotel sector, every detail matters. It's not just about the taste; it's about the presentation, the ambiance, and the experience you offer. Creations from Peggy Oliver are trusted by hotels globally and locally, to add a sense of prestige and sophistication to any dining experience.

From the elegance of our Purity Collection to the charm of our Contemporary range, our hotelware pieces are designed to inspire and delight. Each piece reflects the fusion of artistry and functionality, making them an exquisite addition to your hotel's table settings.

We invite you to explore our hotelware collection and experience the difference that true craftsmanship can bring to your table. Let Peggy Oliver elevate your dining experience and help your culinary creations shine.





## FROM LOCAL ORIGINS TO GLOBAL LUXURY.

In 1984, Peggy Oliver began its' journey to redefine the dining culture. Supported by the unwavering passion of our artisans, the brand swiftly gained prominence, crafting modern collections of tableware that would elevate dining experiences both locally and globally.

Today, Peggy Oliver stands tall as a beacon of premium luxury, sought after by a global clientele. Collaborating with international hoteliers and retailers, Peggy Oliver's legacy continues to live on, shaping the very essence of fine dining worldwide.





# EDEN



Dinner Plate: 320  
Volume: 273 mm



Salad Plate: 311  
Volume: 216mm



BB Plate: 312  
Volume: 166 mm



Meat Plate: 315  
Volume: 237 mm



BB Plate Large: 313



Soup Cup: 398    Soup Setter: 277  
Volume: 112 mm    Volume: 159 mm



Soup Cup: 354  
Volume: 345 ml



Fruit Saucer: 306  
Volume: 275 ml



Cereal Bowl: 307  
Volume: 545 ml



Large Salad Bowl: 309  
Volume: 1600 ml



Tea Cup: 389  
Volume: 85.5 mm



Tea Saucer: 387  
Volume: 141.5mm



Sugar Bowl: 1927



Creamer: 1928



Tea pot: 323  
Volume: 536 ml



Tea Pot: 1923



Tea Pot Small: 1924



Coffee Pot: 1953



PURITY



Dinner plate: 3620  
Volume: 266.5 mm



Salad plate: 3611  
Volume: 207 mm



BB plate: 3612  
Volume: 163.5 mm



Chop plate: 3625  
Volume: 299.5 mm



Meat plate: 3615  
Volume: 229 mm



Cereal Bowl: 3650  
Volume: 800 ml



Coup plate: 3608  
Volume: 215 mm



Coup plate: 8150  
Volume: XX mm



Large salad bowl: 3609  
Volume: 237 mm



Baker: 36380  
Volume: 1600 ml



14" Platter: 4744  
Volume: 44 mm



Sugar bowl: 36271  
Volume: 350 ml



Creamer: 36281  
Volume: 280 ml



Tea pot: 3623  
Volume: 1382 ml



Tea pot (small): 3624  
Volume: 870 ml



Coffee cup: 3692  
Volume: 109 ml

Tea saucer: 3693  
Volume: 123 mm



Coffee Pot: 3653  
Volume: 2260 ml



S E R V E W A R E



Dinner plate: 12620  
Volume: 269 mm



Salad plate: 12611  
Volume: 230 mm



BB plate: 12612  
Volume: 180 mm



Large salad bowl: 12609  
Volume: 2100 ml



Bowl: 12650  
Volume: 1000 ml



Bowl: 12656  
Volume: 3900 ml



16' platter: 12643  
Volume: 401mm x 246mm



14' platter: 12644  
Volume: 352mm



12' platter: 12645  
Volume: 303mm x 151mm





OPUS



Dinner plate: 7320  
Volume: 286 mm



Salad plate: 7311  
Volume: 221 mm



BB plate: 7312  
Volume: 181 mm



Meat plate: 7315  
Volume: 259 mm



Soup cup (stackable bowl): 7398  
Volume: 575 ml



Soup plate: 7310  
Volume: 228 mm



Tea cup: 7389  
Volume: 210ml



Tea saucer: 7387  
Volume: 159mm



Sugar bowl: 7327  
Volume: 300 ml



Creamer: 7328  
Volume: 340 ml



Tea pot: 73231  
Volume: 1000ml



Tea pot (small): 73241  
Volume: 500 ml



Large tea cup: 7379  
Volume: 350ml



Large tea cup setter: 7377  
Volume: 179mm



Coffee cup: 7392  
Volume: 90 ml



Coffee saucer: 7393  
Volume: 116mm



# VESSEL



Chop plate: 4125  
Volume: 308 mm



Fruit saucer: 4106  
Volume: 240 ml



9" platter: 4146  
Volume: 271 mm x 199 mm



Coffee saucer: 4183  
Volume: 144 mm



THICK SIMPLY



Dinner plate: 7220  
Volume: 278mm



Salad plate: 7211  
Volume: 218 mm



BB plate: 7212  
Volume: 167 mm



Meat plate: 7215  
Volume: 240 mm



Soup cup: 7298  
Volume: 340 ml



Soup setter: 7296  
Volume: 178.5mm



Soup plate: 7210  
Volume: 234 mm



Cereal bowl  
Volume: 7207 ml



Large salad bowl 7209  
Volume: 191.5 mm



Tea pot: 7223  
Volume: 875 ml



Tea pot (small): 7224  
Volume: 885 ml



Large tea cup setter: 7277  
Volume: 159.5 mm



Coffee saucer: 7293  
Volume: 136 mm



Mug cup saucer: 7297  
Volume: 152 mm



# AURORA



Fruit Setter: 4806  
Volume: 400 ml



9" Platter: 4803  
Volume: 313 mm x 120 mm



SIMPLY SQUARE



12" Platter: 11749



12" Platter: 11703



Tea Cup: 5989  
Volume: 400 ml



Tea Saucer: 5987  
Volume: 149 mm x 149 mm



Sugar Bowl: 5927  
Volume: 220 ml



Creamer: 5928  
Volume: 210 ml



Tea Pot: 5923  
Volume: 1190 ml



Large Tea Cup: 5979  
Volume: 400 ml



Large Tea Cup Setter: 5977  
Volume: 171mm x 171 mm



Coffee Cup: 5992  
Volume: 400ml



Coffee Saucer: 5993



Coffee Pot: 5953  
Volume: 1450 ml



FLAT RIM



Dinner plate: 4520  
Volume: 272 mm



BB plate: 4512  
Volume: 180.5 mm



Soup Cup: 4598  
Volume: 340 ml



Soup Setter: 4596  
Volume: 177 mm



Soup plate: 4510  
Volume: 232.5 mm



14" platter: 4544  
Volume: 355mm x 270mm



Tea cup: 4589  
Volume: 173 ml



Tea saucer: 4587  
Volume: 137.5 mm



Tea pot: 4523  
Volume: 425 ml



Large tea cup: 4579  
Volume: 240 ml



Large tea cup setter: 4577  
Volume: 155 mm

SALT & PEPPER SHAKERS



101 & 102  
Volume: 272 mm



3601 & 3602  
Volume: 272 mm



EGG CUP



7235  
Volume: 35 ml

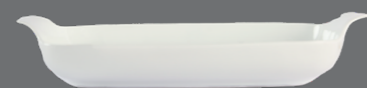


135  
Volume: 52 mm

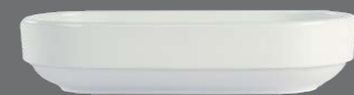


8835  
Volume: 52 mm

## TRAYS



Trays: 6103  
Volume: 236 mm x 140 mm



Trays: 638  
Volume: 2000 ml



Trays: 3249  
Volume: 385 mm x 153 mm



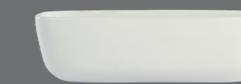
Trays: 6169  
Volume: 339 mm x 229 mm

## FINGER BOWLS



7350  
Volume: 775 ml

## BUTTER COVER & BUTTER SETTER



903  
Volume: 156.5 mm x 67 mm

## TOOTHPICK HOLDERS



104  
Volume: 31 mm



4904  
Volume: 10 ml



## SPOONS



121  
Volume: 144 g



3021  
Volume: 38 g

## GRATIN DISHES



7336  
Volume: 308 mm x 138 mm



7338  
Volume: 368 mm x 160 mm

## VASES



4537  
Volume: 180 ml



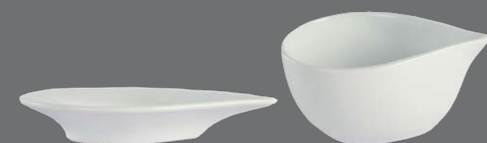
437  
Volume: 203 ml



## GRAVY BOATS & SETTERS



3642  
Volume: 600ml



3041 & 3042  
Volume: 143,0 mm x 110,0 mm & 210 ml



641 & 642  
Volume: 143,0 mm x 110,0 mm & 210 ml



## PASTA PLATES



7376  
Volume: 304 mm

## TEA MUGS



3688  
Volume: 350 ml



5986  
Volume: 350 ml



4686  
Volume: 325 ml



8086  
Volume: XX



4788  
Volume: 427 ml



3086  
Volume: 310 ml

## SMALL DISHES (S)



3054  
Volume: 35 ml



154  
Volume: 25 ml



955  
Volume: 55 ml

## SMALL DISHES (M)



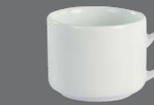
7255  
Volume: 80 ml



3055  
Volume: 70 ml



126  
Volume: 90 ml



182  
Volume: 77 ml



655  
Volume: XX

## SMALL DISHES (L)



7256  
Volume: 160 ml



3056  
Volume: 155 ml



8854  
Volume: 130 ml



656  
Volume: XX



4503  
Volume: 119 mm x 89 mm



350  
Volume: 215 ml



7250  
Volume: 300 ml

## BOWLS (S)



4754  
Volume: 275 ml



4748  
Volume: 80 ml



11706  
Volume: XX

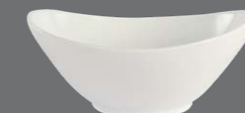


4948  
Volume: 86mm x 86 mm

## BOWLS (M)



4707  
Volume: 675 ml



4750  
Volume: 1750 ml



11707  
Volume: 435 ml



3007  
Volume: 475 g



5455  
Volume: 620 ml



## BOWLS (L)



4755 & 4756  
Volume: 2065 ml & 1510 ml



4765  
Volume: 1700 ml



11708 & 11709  
Volume: 640 ml & 870 ml



6638  
Volume: 2000 ml



6636  
Volume: 388 mm x 237 mm

## TEA CUPS & SAUCERS



689 & 687  
Volume: XX



3087  
Volume: 158 ml



1089 & 1087  
Volume: XX



3489  
Volume: 202 ml

## SOUP CUP & SETTERS



4696  
Volume: 202.5 mm



5498 & 5496  
Volume: 600 ml & 184 mm



6698 & 6696  
Volume: 350 ml & 184 mm

## SUGAR BOWLS



927  
Volume: 330 ml



627  
Volume: XX

## CREAMERS



628  
Volume: XX



5432  
Volume: 360 ml



528  
Volume: 370 ml

## COFFEE POTS



653  
Volume: XX



553  
Volume: 1430 ml



6153  
Volume: 1200 ml



153  
Volume: 1160 ml

## TEA POTS



623  
Volume: XX



123  
Volume: 930 ml

## LARGE TEA CUPS & SETTERS



6679  
Volume: 350 ml



477  
Volume: 72 ml



3479 & 3477  
Volume: 325 ml & 160 ml

## COFFEE CUPS & SAUCERS



497  
Volume: 152 ml



692 & 693  
Volume: XX



6692 & 6693  
Volume: 90 ml & 127 ml



3993  
Volume: 125 ml



3492 & 3493  
Volume: 100 ml & 123 ml



482 & 483  
Volume: 79 ml & 126 ml

## OTHER



4803 for 157/158/159  
Volume: 313 mm x 120 mm



199  
Volume: 235 ml